



SFC Series

Caplug No.	Dimensions								Packaging			Caplug No.
	Standard Carton				Mini Pak Quantity	Shipping Wt. (Approx.)		No. of Pieces				
	A		B			lbs	kgs					
in	mm	in	mm	lbs	kgs	Pieces	Quantity					
SFC-156-32	.156	3.96	2.00	50.80	5	2.2	500	100	SFC-156-32			
SFC-187-28	.187	4.74	1.75	44.45	4	1.8	500	100	SFC-187-28			
SFC-234-32	.234	5.94	2.00	50.80	5	2.2	500	100	SFC-234-32			
SFC-294-21	.294	7.46	1.31	33.27	4	1.8	500	100	SFC-294-21			
SFC-315-16	.315	8.00	1.00	25.40	3	1.3	250	50	SFC-315-16			
SFC-380-16	.380	9.65	1.00	25.40	2	0.9	100	20	SFC-380-16			
SFC-438-16	.438	11.12	1.00	25.40	2	0.9	100	20	SFC-438-16			
SFC-608-24	.608	15.44	1.50	38.10	2	0.9	100	20	SFC-608-24			

SRC Series

Caplug No.	Dimensions								Packaging				Caplug No.
	To Fit Stud Size		A		B		C		Standard Carton		Mini Pak Quantity		
	in	mm	in	mm	in	mm	in	mm	Shipping Wt. (Approx.)	No. of Pieces			
lbs	kgs	Pieces	Quantity										
SRC-040-12	-	-	.040	1.02	.05	1.27	.75	19.05	2	0.9	1000	200	SRC-040-12
SRC-080-12	-	-	.080	2.03	.06	1.52	.75	19.05	2	0.9	1000	200	SRC-080-12
SRC-093-12	4	101.60	.093	2.36	.05	1.27	.75	19.05	2	0.9	1000	150	SRC-093-12
SRC-109-12	5	127.00	.109	2.77	.05	1.27	.75	19.05	2	0.9	1000	150	SRC-109-12
SRC-125-16	6	152.41	.125	3.18	.06	1.52	1.00	25.40	2	0.9	1000	150	SRC-125-16
SRC-140-16	-	-	.140	3.56	.06	1.52	1.00	25.40	3	1.3	1000	200	SRC-140-16
SRC-156-16	-	-	.156	3.96	.06	1.52	1.00	25.40	2	0.9	1000	100	SRC-156-16
SRC-172-16	-	-	.172	4.37	.06	1.52	1.00	25.40	3	1.3	1000	100	SRC-172-16
SRC-187-16	12	304.81	.187	4.75	.06	1.52	1.00	25.40	3	1.3	1000	100	SRC-187-16
SRC-218-16	-	-	.218	5.54	.06	1.52	1.00	25.40	4	1.8	1000	100	SRC-218-16
SRC-234-16	1/4	6.35	.234	5.94	.06	1.52	1.00	25.40	4	1.8	1000	100	SRC-234-16
SRC-250-16	1/4	6.35	.250	6.35	.06	1.52	1.00	25.40	4	1.8	1000	100	SRC-250-16
SRC-281-16	-	-	.281	7.14	.06	1.52	1.00	25.40	4	1.8	1000	100	SRC-281-16
SRC-312-16	5/16	7.94	.312	7.93	.06	1.52	1.00	25.40	5	2.2	1000	80	SRC-312-16
SRC-375-16	3/8	9.53	.375	9.53	.06	1.52	1.00	25.40	5	2.2	1000	80	SRC-375-16
SRC-406-16	-	-	.406	10.31	.06	1.52	1.00	25.40	2	0.9	200	50	SRC-406-16
SRC-500-24	-	-	.500	12.70	.06	1.52	1.50	38.10	2	0.9	200	50	SRC-500-24
SRC-562-24	-	-	.562	14.27	.06	1.52	1.50	38.10	3	1.3	200	40	SRC-562-24
SRC-625-24	-	-	.625	15.88	.06	1.52	1.50	38.10	3	1.3	200	50	SRC-625-24
SRC-687-24	-	-	.687	17.45	.06	1.52	1.50	38.10	4	1.8	200	50	SRC-687-24
SRC-750-24	-	-	.750	19.05	.06	1.52	1.50	38.10	4	1.8	200	50	SRC-750-24
SRC-812-24	-	-	.812	20.62	.06	1.52	1.50	38.10	6	2.7	200	40	SRC-812-24
SRC-875-24	-	-	.875	22.22	.06	1.52	1.50	38.10	6	2.7	200	40	SRC-875-24
SRC-937-24	-	-	.937	23.79	.06	1.52	1.50	38.10	7	3.1	200	40	SRC-937-24
SRC-1000-24	-	-	1.000	25.40	.06	1.52	1.50	38.10	7	3.1	200	40	SRC-1000-24
SRC-1062-24	-	-	1.062	26.97	.06	1.52	1.50	38.10	5	2.2	100	20	SRC-1062-24
SRC-1125-24	-	-	1.125	28.57	.06	1.52	1.50	38.10	6	2.7	100	20	SRC-1125-24
SRC-1187-24	-	-	1.187	30.14	.06	1.52	1.50	38.10	6	2.7	100	20	SRC-1187-24
SRC-1250-24	-	-	1.250	31.75	.06	1.52	1.50	38.10	7	3.1	100	20	SRC-1250-24
SRC-1375-24	-	-	1.375	34.92	.06	1.52	1.50	38.10	7	3.1	100	20	SRC-1375-24
SRC-1500-28	-	-	1.500	38.10	.06	1.52	1.75	44.45	8	3.6	100	20	SRC-1500-28
SRC-1625-32	-	-	1.625	41.27	.06	1.52	2.00	50.80	7	3.1	100	20	SRC-1625-32
SRC-1750-32	-	-	1.750	44.45	.06	1.52	2.00	50.80	8	3.6	100	20	SRC-1750-32
SRC-1875-32	-	-	1.875	47.62	.06	1.52	2.00	50.80	8	3.6	100	20	SRC-1875-32
SRC-2000-32	-	-	2.000	50.80	.06	1.52	2.00	50.80	9	4.1	100	20	SRC-2000-32



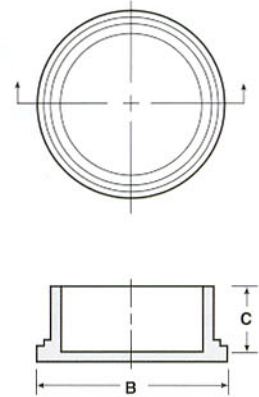
CAPS non-threaded

SEC Series Electrostatic-Free Caps for Threaded Connectors

Static Dissipative SEC Series Caplugs provide positive ESD and physical protection for all common sizes of threaded electrical and electronic connectors. Also suitable for protecting non-threaded bayonet-type connectors.

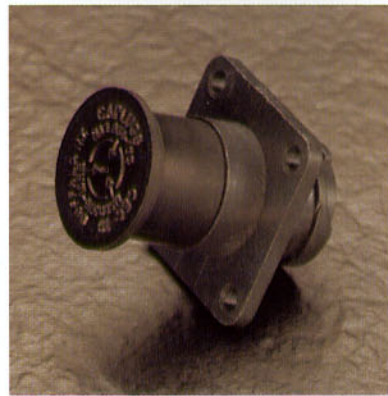


MATERIAL: Static Dissipative Polyethylene
COLOR: Pink

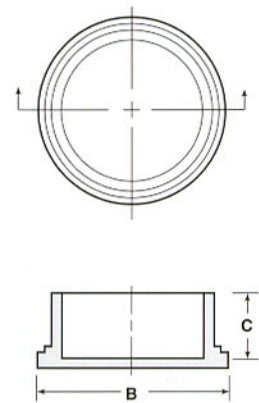


CEC Series Conductive Caps

For all common sizes of threaded electrical and electronic connectors, Caplugs CEC Conductive Caps are also suitable for protecting non-threaded bayonet-type connectors. In addition to dissipating electrostatic charges, they provide an electrical shield over the end of the connector.



MATERIAL: Conductive Polyethylene
COLOR: Black



non-threaded CAPS



SEC Series

Applicable Specs.: MS-90376-RF, NAS-831B

Caplug No.	Dimensions					Packaging				Caplug No.
	To Fit Thread Size	B		C		Standard Carton**		Mini Pak Quantity		
		in	mm	in	mm	Shipping Wt. (Approx.)			No. of Pieces	
						lbs	kgs			
SEC-04	1/4	.48	12.19	.50	12.70	7	3.1	5000	1000	SEC-04
SEC-05	5/16	.55	13.97	.56	14.22	8	3.6	5000	1000	SEC-05
SEC-06	3/8	.62	15.75	.50	12.70	9	4.0	5000	1000	SEC-06
SEC-08	1/2	.74	18.79	.50	12.70	10	4.5	5000	1000	SEC-08
SEC-09	9/16	.78	19.81	.44	11.18	11	4.9	5000	1000	SEC-09
SEC-10	5/8	.84	21.34	.50	12.70	11	4.9	5000	1000	SEC-10
SEC-12	3/4	.97	24.63	.50	12.70	15	6.8	5000	1000	SEC-12
SEC-14	7/8	1.12	28.44	.50	12.70	18	8.1	5000	1000	SEC-14
SEC-16	1	1.22	30.98	.50	12.70	11	4.9	2500	500	SEC-16
SEC-18	1 1/8	1.33	33.78	.56	14.22	12	5.4	2500	500	SEC-18
SEC-19	1 3/16	1.40	35.56	.56	14.22	13	5.8	2500	500	SEC-19
SEC-20	1 1/4	1.46	37.09	.56	14.22	17	7.6	2500	500	SEC-20
SEC-22	1 3/8	1.59	40.39	.56	14.22	17	7.6	2500	500	SEC-22
SEC-23	1 7/16	1.65	41.91	.56	14.22	11	4.9	1000	200	SEC-23
SEC-24	1 1/2	1.70	43.18	.56	14.22	18	8.1	2500	500	SEC-24
SEC-25	1 9/16	1.73	43.94	.48	12.19	17	7.6	2500	500	SEC-25
SEC-26	1 5/8	1.91	48.51	.55	13.97	12	5.4	1000	200	SEC-26
SEC-28	1 3/4	1.95	49.53	.56	14.22	13	5.8	1000	200	SEC-28
SEC-32	2	2.20	55.88	.56	14.22	13	5.8	1000	200	SEC-32
SEC-36	2 1/4	2.43	61.72	.60	15.24	16	7.2	1000	200	SEC-36
SEC-40	2 1/2	2.68	68.07	.62	15.75	17	7.6	1000	200	SEC-40
SEC-44	2 3/4	2.96	75.19	.60	15.24	11	4.9	500	100	SEC-44
SEC-48	3	3.22	81.78	.60	15.24	14	6.3	500	100	SEC-48

Applicable Specs.: MS-90376-RB, NAS-831C

CEC Series

Caplug No.	Dimensions					Packaging				Caplug No.
	To Fit Thread Size	B		C		Standard Carton**		Mini Pak Quantity		
		in	mm	in	mm	Shipping Wt. (Approx.)			No. of Pieces	
						lbs	kgs			
CEC-04	1/4	.48	12.19	.49	12.45	7	3.1	5000	1000	CEC-04
CEC-05	5/16	.56	14.22	.56	14.22	9	4.0	5000	1000	CEC-05
CEC-06	3/8	.62	15.75	.51	12.95	10	4.5	5000	1000	CEC-06
CEC-08	1/2	.73	18.54	.50	12.70	13	5.8	5000	1000	CEC-08
CEC-10	5/8	.84	21.34	.50	12.70	15	6.8	5000	1000	CEC-10
CEC-12	3/4	.97	24.64	.50	12.70	19	8.6	5000	1000	CEC-12
CEC-14	7/8	1.15	29.21	.50	12.70	23	10.3	5000	1000	CEC-14
CEC-16	1	1.23	31.24	.50	12.70	14	6.3	2500	500	CEC-16
CEC-18	1 1/8	1.36	34.55	.56	14.22	16	7.2	2500	500	CEC-18
CEC-19	1 3/16	1.42	36.07	.56	14.22	18	8.1	2500	500	CEC-19
CEC-20	1 1/4	1.48	37.59	.57	14.48	24	10.8	2500	500	CEC-20
CEC-22	1 3/8	1.63	41.40	.57	14.48	23	10.3	2500	500	CEC-22
CEC-23	1 7/16	1.68	42.67	.56	14.22	9	4.0	1000	200	CEC-23
CEC-24	1 1/2	1.70	43.18	.56	14.22	24	10.8	2500	500	CEC-24
CEC-25	1 9/16	1.75	44.45	.50	12.70	25	11.2	2500	500	CEC-25
CEC-26	1 5/8	1.93	49.02	.56	14.22	13	5.8	1000	200	CEC-26
CEC-28	1 3/4	2.01	51.06	.56	14.22	16	7.2	1000	200	CEC-28
CEC-29	1 13/16	2.03	51.56	.56	14.22	14	6.3	1000	200	CEC-29
CEC-32	2	2.23	56.64	.55	13.97	17	7.6	1000	200	CEC-32
CEC-36	2 1/4	2.46	62.49	.62	15.75	19	8.6	1000	200	CEC-36
CEC-40	2 1/2	2.70	68.58	.62	15.75	17	7.6	1000	200	CEC-40
CEC-44	2 3/4	2.99	75.95	.62	15.75	11	4.9	500	100	CEC-44
CEC-48	3	3.27	83.06	.60	15.24	14	6.3	500	100	CEC-48
CEC-64	4	4.19	106.43	1.01	25.66	10	4.5	200	40	CEC-64

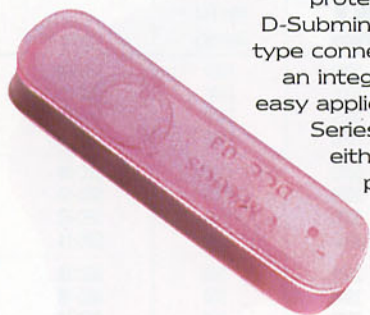
** All SEC Static Dissipative Caplugs and CEC Conductive Caplugs are packaged in static dissipative poly bags.



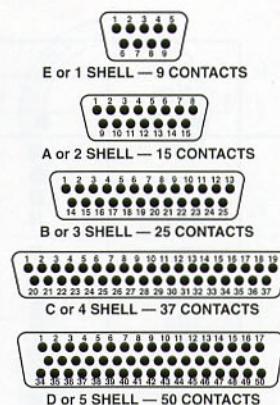
CAPS non-threaded

DCC Series Static Dissipative and Conductive Protectors for D-Subminiature Connectors

DCC Series Caplugs are designed to provide electrostatic discharge protection of rectangular D-Subminiature input/output-type connectors. Molded with an integral flange to enable easy application and removal, Series DCC is available in either black conductive polyethylene or pink static dissipative ethylene vinyl acetate.



MATERIAL: Static Dissipative Ethylene Vinyl Acetate or Conductive Polyethylene
COLOR: Pink or Black

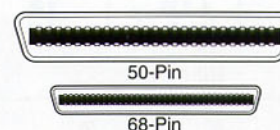


EMC Series Static Dissipative and Conductive Protectors for Electro Miniature Connectors

EMC Series Caplugs fit 68-pin SCSI connectors and 50-pin Champ-type connectors. Series EMC is available in either black conductive polyethylene or pink static dissipative ethylene vinyl acetate.

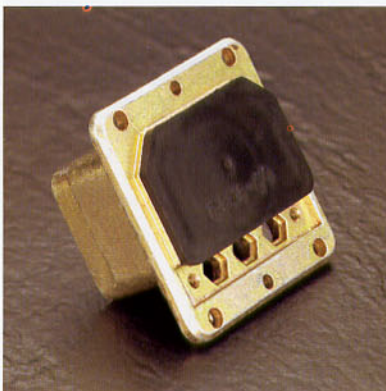


MATERIAL: Static Dissipative Ethylene Vinyl Acetate or Conductive Polyethylene
COLOR: Pink or Black

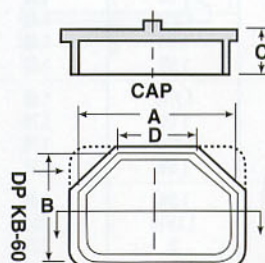


DP Series Conductive Caps

DP Series Conductive Caplugs are designed to dissipate electrostatic charges, provide mechanical protection and an electrical shielding for ITT Cannon-style connectors commonly used in aerospace and military applications.



MATERIAL: Conductive Polyethylene
COLOR: Black





DCC Series

Caplug No.	Dimensions		Packaging				Caplug No.
	Standard No. of Contacts*	Contact Type	Standard Carton**		No. of Pieces	Mini Pak Quantity	
			Shipping Wt. (Approx.)				
lbs	kgs						
DCC-01	9	Socket	7	3.1	5000	1000	DCC-01
DCC-11	9	Pin	7	3.1	5000	1000	DCC-11
DCC-02	15	Socket	11	4.9	5000	1000	DCC-02
DCC-12	15	Pin	11	4.9	5000	1000	DCC-12
DCC-03	25	Socket	17	7.6	5000	1000	DCC-03
DCC-13	25	Pin	17	7.6	5000	1000	DCC-13
DCC-04	37	Socket	19	8.6	5000	1000	DCC-04
DCC-14	37	Pin	19	8.6	5000	1000	DCC-14
DCC-05	50	Socket	20	9.0	4000	800	DCC-05
DCC-15	50	Pin	20	9.0	4000	800	DCC-15

* Parts also fit "high density" and "double density" connectors. ** All DCC Static Dissipative Caplugs are packaged in static dissipative poly bags.

EMC Series

Caplug No.	Dimensions		Packaging				Caplug No.
	Standard No. of Contacts*	Contact Type	Standard Carton**		No. of Pieces	Mini Pak Quantity	
			Shipping Wt. (Approx.)				
lbs	kgs						
EMC-50	50	Receptacle	20	9.07	1000	200	EMC-50
EMC-68	68	Receptacle	20	9.07	5000	1000	EMC-68

* Parts also fit "high density" and "double density" connectors. ** All EMC Static Dissipative Caplugs are packaged in static dissipative poly bags.

DP Series

Caplug No.	Dimensions								Packaging				Caplug No.
	A		B		C		D		Standard Carton		Mini Pak Quantity		
	in	mm	in	mm	in	mm	in	mm	Shipping Wt. (Approx.)				
lbs	kgs												
DP XA-59	1.611	40.92	.981	24.92	.67	17.02	1.14	28.96	6	2.72	500	100	DP XA-59
DP KB-60	3.351	85.12	.990	25.15	.57	14.73	-	-	6	2.72	200	40	DP KB-60